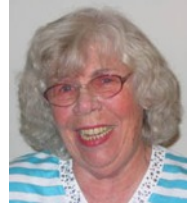


Poetry Society of Texas - Gulf Coast Poets Chapter
Barnes & Noble Bookstore (1029 W. Bay Area Blvd.)
Saturday - September 10, 2011, 10:30 -



Featured Speakers
The Lady Ann(e)s



Annemarie Conlon Ann Fogelman

Annemarie Conlon says she used to write poetry a long time ago – until life got in the way. She recently received her PhD from the Department of Social Work at the University of Texas at Austin. Her manuscript, *Using poetry to reconcile unfinished business at end-of-life*, was recently accepted for the March edition of the *Journal of Poetry Therapy*. Annemarie was previously employed at M.D. Anderson Cancer Center where she provided individual, group, and family counseling and support to people diagnosed with lung cancer and their families. Annemarie’s poetry honors her patients by giving voice to those who are no longer here. She is a member of Sol Magazine Projects Poetry Works Workshops.

Ann Fogelman, a writer of memoirs in prose and poetry, lives in Friendswood, Texas. Her work has been published in *Boundless*, *Pets Across America*, *The Noble Generation*, *That Thing You Do*, *They That Go Down to the Sea* and other anthologies and school publications. She is a member of Bay Area Writers League, Poetry Society of Texas, OLLI at UTMB and The Arts Alliance Center in Clear Lake, and is a founding Lifetime Member of the Gulf Coast Poets, and has been its official Guest Liaison for five years.

UPCOMING

October 1, 2011, Houston Poetry Fest Poetry Out of Bounds
Barnes & Noble Bookstore, Bay Area Blvd, 1:00 PM

October 8, Houston Poetry Fest Fieldtrip, Houston

November 12, 2011, Erica Lehrer

Barnes & Noble Bookstore, Bay Area Blvd, 10:30 am

December 19, 2011, Annual Luncheon - Featuring Dave Parsons,
Robert Clark, Sarah Cortez, and John Gorman.

LIFETIME MEMBER POEM, SEPTEMBER, 2011
LARRY D. THOMAS, 2008 Texas State Poet Laureate

House Finch in Summer

Through my office window,
I watched it for several hours
darting from its perch
in the holly tree, and then,
within minutes, returning.



The tree stood just a few feet
from the doors of the art museum.
Each time a door was opened,
a blast of air-conditioned air
rushed out, ruffling the ruby

plumage of its head and breast.
It just closed its eyes,
braced itself on its branch,
and froze. All day long it did this,
never tiring of its antics,

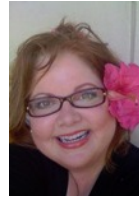
as if relishing the air
redolent and tumescent
with the oils of the masters;
laden with the bated,
exhaled breath of astonishment.

(published in The Christian Science
Monitor)

NEW MEMBER POEM, SEPTEMBER 2011
SHEREE RABE

Moment of Beauty

This morning pieces of our shattered world
glistened like glass shards
in the gossamer canons
of soft sunlight-
a magnificent mosaic
born in turmoil
shaded with the colors
of our scattered dreams-
random patterns
on the wood floor,
beauty in the pain
of losing you
so violently.
What beauty
can erase
the image
of you
buried
alive
sitting
at a
red light
on such a
beautiful
sunny
day?



Honorary Lifetime Gulf Coast Poets

Honorary Lifetime Members are individuals distinguished in the field of poetry, and in the cause of poetry. Each year, in the month of November, nominations are opened for a month to seek a new Honorary Lifetime Member. To nominate a new Honorary Lifetime Member, current members may provide the Gulf Coast Poets with a short biography and contact information of the proposed individual.

Honorary Lifetime Members:

Honorary Lifetime	Ted O. Badger (2011)	PST
Honorary Lifetime	Alan Birkelbach (2010)	PST
Honorary Lifetime	Robert Clark (2009)	
Honorary Lifetime	John Gorman (2007)	PST
Honorary Lifetime	Peggy Z. Lynch (2006)	PST
Honorary Lifetime	Larry Thomas (2008)	

Other Lifetime Members

Lifetime	Diana Dettling Buckley	PST
Lifetime (Founder)	Mary M. Carlisle (President)	PST
Lifetime (Founder)	David Cowen	
Lifetime	Patricia Dixon	PST
Lifetime	Susan Ellis	
Lifetime (Founder)	Ann Fogelman (Greeter)	PST
Lifetime (Founder)	Lynne Streeter	PST
Lifetime	Richard Peake	PST

Officers

We are always looking for those who wish to serve as officers. To apply for such service, contact the GulfCoastPoets@gmail.com with a short biography. Although not required, it would be helpful to touch on past publication, honors, and prior service to the community, if any.

Officers: Mary Margaret Carlisle, President; Leo Waltz, Treasurer; Laura Pena, Vice President & Secretary
Volunteers: Ann Fogelman, Kay Cox, Barbara Carle

Gulf Coast Poets

Treasurer Report for Sept 10, 2011 General Meeting

Report Period: July 1 – August 31, 2011 -- with 2011 YTD totals

This report covers the two month period since last report/

Cash Flow: July 1 – Aug. 31, 2011

2011 YTD

Contests.....		0.00	0.00
Dues.....		15.00	340.00
Lifetime (0)	0.00		
Founding (0)	0.00		
Chapter (1)	15.00		
Speaker Expense.....		-0.00	-392.97
Honorarium	-0.00		
Speaker Lunch	-0.00		
Donations.....		0.00	260.00
Interest/Dividend.....		.38	1.48
Other		.00	-0.00
Net Cash flow, July 1 – Aug. 31		15.38	208.51

Account Balances: July 1 – Aug. 31, 2011 –

Total for year

Checking Ledger			
<i>Beginning</i>		2342.37	2149.24
Transferred from Cash	15.00		(1/1/2011)
Checks written (0)	-0.00		
Debit card (0)	-0.00		
Dividend	.38		
Ending		2357.75	2357.75
Outstanding checks (2)	35.00	Bank chk bal=2392.75	
Cash (undeposited checks, cash)			
<i>Beginning</i>		0.00	0.00
Received	15.00		
Transferred to Checking	-15.00		
Ending		0.00	0.00
Savings (int. posted quarterly)			
<i>Beginning</i>		5.33	5.33
Ending		5.33	5.33
All accounts			(1/1/2011)
<i>Beginning</i>	7/1/2011	2347.70	2154.57
<i>Ending</i>	8/31/2011	2363.08	2363.08

Treasurer Reports will normally end on the last day of the month preceding the meeting and cover the month(s) since the previous report.

Upcoming annual expense (\$17) for website domain name GulfCoastPoets.info is due in September.

One benefit of coming to our meetings is that attendees meet and network with our speakers, some of the best poets in Texas.



November's speaker is poet Erica Lehrer, an award-winning journalist and founding member of Net Poets Society (NetPoSo), a group of poets from Houston. Graduate of Princeton, and the N.Y.U. School of Law, Ms. Lehrer has studied at InPrint, Inc. with Dave Parsons (2011 Texas State Poet Laureate) and novelist Farnoosh Moshiri.

Leftovers

There's always a straggler, the cousin who will not leave, who wants what we have: a nucleus of brothers, sisters, parents and pets who can drape themselves over the furniture after the party ends and linger late into the night, talking about nothing, dozing off now and then, content to belong.

None of us can quite remember how we're related to this guest. Is he a second cousin? Third? More likely a cousin twice or thrice removed. Gentle hints of fatigue to no avail, we watch as he pours himself another drink, a tall one. We stopped drinking hours ago. "Why not stay over?" we finally ask. "It's a long way to Wimberley. We can continue over omelets and toast, fresh fruit, French Roast." We see him vacillating – *yes, no, yes* – 'til he shakes his head: "I'd better go...."

With hugs all around and vague promises to stay in touch, he's out the door in a sudden rush. We do not tarry, either, but peel off to our rooms to slump into the dreamless sleep of the overfed on Thanksgiving.

GULF COAST POETS MEMBERS

Send Venue Information to: GulfCoastPoets@gmail.com

Visit us on Facebook:

<http://www.facebook.com/gulfcoastpoets>

Find a GCP membership form at our website:

<http://GulfCoastPoets.info/>

Officers

We are always looking for those who wish to serve as officers. To apply for such service, contact the GulfCoastPoets@gmail.com with a short biography. Although not required, it would be helpful to touch on past publication, honors, and prior service to the community, if any.

Gulf Coast Poets membership runs from January 1st through December 31st. Our dues are \$15.00 a year. While our chapter is part of PST, to be an individual member of PST, you must pay state dues as well.

Are you a member of PST? If so, have you renewed?

Poetry Society of Texas membership runs from July 1st through June 30th of each year. Membership dues for PST are \$25.00 a year for Active and Associate members and are payable in advance on an annual basis from July 1 to June 30. Members, unless specifically exempt, must have their dues current before submitting contest entries. To be listed in the current A Book of the Year, dues must be received by November 30. The status of a member's dues is shown on the address label of The Bulletin. A brochure giving full requirements for membership may be obtained from the Membership Chairman. Send dues, correspondence relating thereto, change of address and/or corrections to:

Lynn Lewis, Membership Chairman
1704 Enderly Place
Fort Worth, TX 76104
E-Mail: elsquared59@yahoo.com

2011 Member List - Gulf Coast Poets
PST indicates Poetry Society of Texas Membership

Chapter (Founder)	Jan Bernstein	PST
Chapter	Barbara Carle	PST
Chapter (Speaker)	Daniel Carrington, Jr.	
Chapter	Diana Cordova	
Chapter	Annmarie Conlon	
Chapter	Kay Cox	
Chapter (Speaker)	Winston Derden	
Chapter (Founder)	Edith Escalante	
Chapter	Kelly Ellis	
Chapter (Founder)	Lauran Perry English	PST
Chapter	Sybil Estess	PST
Chapter	Debi Fairchild	PST
Chapter	Dede Fox	
Chapter	Juan Gomez	
Chapter	Mary Ann Goodwin	PST
Chapter	Sharon Goodwin	
Chapter (Speaker)	Jerry Hamby	
Chapter (Founder)	Jill Haugen	
Chapter (Founder)	Glynn Monroe Irby	
Chapter	Jean Mahavier	PST
Chapter (Speaker)	Carlos Marquina	
Chapter (Speaker)	David Meischen	
Chapter	Darla McBryde	PST
Chapter	Penelope McFadin	PST
Chapter (Speaker)	John Milkereit	
Chapter	Terry J. Miller	PST
Chapter	Jan M. Nezart	
Chapter	Laura Peña (Vice President, Secretary)	
Chapter	Oscar Peña	
Chapter	Sheree Rabe	
Chapter (Speaker)	Gary Rosin	
Chapter	Sharman Speed	
Chapter (Speaker)	Sandy Stromberg	
Chapter	Marie Delgado Travis	PST
Chapter (Founder)	Rebecca Hatcher Travis	PST
Chapter (Founder)	Adriana Babiak Vázquez	
Chapter (Founder)	Luis Vázquez	
Chapter (Founder)	Leo F. Waltz (Treasurer)	PST
Chapter (Speaker)	Scott Wiggerman	PST

2011 Houston Poetry Fest Out of Bounds Reading

October 1, 2011 - Barnes & Noble, Bay Area Blvd, in Webster, Texas, sponsored by the Gulf Coast Poets Chapter of the Poetry Society of Texas. Guest poets: Robert Lee Brewer, John Gorman, Larry Fontenot, Jerry Hamby, Jeremyah Payne. Open Mic after our other featured poets.

2011 Houston Poetry Fest

Oct 7, 8, 9, 2011 - Willow Street Pump Station of the University of Houston – Downtown, 811 North San Jacinto.

Five members of the Gulf Coast Poets are among the nineteen Juried Poets of the 2011 Houston Poetry Fest: Garret Middaugh, Houston, TX; John Milkereit, Houston, TX; Terry Jude Miller, Richmond, TX; Laura Peña, Katy, TX; Sheree L. Rabe, Austin, TX.

Fmi about the Houston Poetry Fest: <http://houstonpoetryfest.info/>

ARE YOU SUBMITTING YOUR WORK?



Gulf Coast: A Journal of Literature and Fine Art
Department of English, University of Houston
(not affiliated with the Gulf Coast Poets)
edit@gulfcoastmag.org 713-743-3223
<http://www.gulfcoastmag.org/index.php?n=5>

ARE YOU VOLUNTEERING YOUR TIME?

<http://www.witshouston.org/>

WHAT'S UP WITH GCP MEMBERS

We now have 39 Chapter Members, and 14 Lifetime Members., fifty-three members total.

Autobiography of GCP Lifetime Member Larry D. Thomas, 2008 Texas State Poet Laureate: <http://larrydthomas.com/about.htm>
You can read his poetry, or listen to him read.

Lifetime Member, Ted O. Badger, has been named the 2011 Fort Bend Poet Laureate. <http://ultimatefortbend.com/stories/240757-ted-o-badger-named-fort-bend-poet-laureate>

For information about the Fort Bend Poets Group, led by GCP member, Terry J. Miller, visit www.fortbendpoets.org

Listen to an interview with GCP Lifetime Member John Gorman who recently read for Public Poetry with Carol Munn: <http://www.thefrontrow.org/articles/1307141150-Poets-Carol-Munn-and-John-Gorman.html>

Autobiography by GCP Lifetime Member, Alan Birkelbach, 2005 Texas State Poet Laureate: <http://alanbirkelbach.com/about.html>

First Friday Reading Series at Inprint House in Houston are led by GCP Lifetime Member, Robert Clark, who is also the organizer of the Houston Poetry Fest. Fmi and a schedule of upcoming readings, visit: <http://www.inprintheouston.org/first-fridays> or write to Robert at houstonfirstfri@aol.com



July's First Friday featured GCP Lifetime Member, John Gorman. September's First Friday featured GCP member, Sybil Estess.

SIGHT INTO SOUND

Sight into Sound is an independent non-profit organization with a mission to enrich the lives of individuals with visual, physical and learning disabilities through Radio Reading, Custom Recording and Audio Description services.

Gulf Coast Poets who have recorded for Sight into Sound:
Dede Fox, John Milkereit, Larry Thomas, Mary Margaret Carlisle,
Sandy Stromberg.

Would you like to read your poetry for Sight into Sound?

Phone: 713-622-2767

Sight into Sound, 3935 Essex Lane, Houston, TX 77027

Would you like to listen to the Poets Corner at Sight into Sound?

http://www.tapingfortheblind.org/Audio_Archives/index.html

Click on POETS CORNER. For other programs visit

<http://www.tapingfortheblind.org/radio.html>

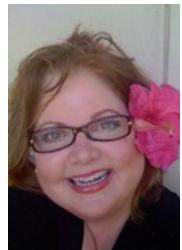
Registration is underway for Sight into Sound's annual golf tournament, Pine Forest Country Club on Monday, September 26, 12:30 p.m. This year's tourney will feature Bruce Hooper, national champion of the US Blind Golf Association. Inspiring and amazing to watch, Bruce is an 8 handicapper and will compete on a par 3 during our tournament. In addition to Bruce, we will feature clinics with local golf pros. We hope you can join us and support fellow golfers who enjoy the services of Sight into Sound.

Please welcome two new Gulf Coast Poets members!



Jan Nezart , Houston, Texas

Sheree Rabe, Austin, Texas



GULF COAST POETS MEMBER LED VENUES

Support Gulf Coast Poets by attending:

Saturdays

Gulf Coast Poets
General Meeting,
Most Second Saturdays
(Webster) 10:30 am.
Barnes & Noble,
Bay Area Blvd at I-45
GulfCoastPoets@gmail.com

Sundays

Sol Magazine Projects
Sol.Editor@prodigy.net

Mondays

Seabrook Coffee Oasis
Reading Series, First
Monday, 7 pm (Seabrook).
Want to be an MC?
contact: borimex@swbell.net

Gulf Coast Poets Critique
Group - Most Fourth
Mondays (Seabrook)
Moderator needed. 6:45
pm. Seabrook Coffee
Oasis, NASA Parkway at
Kirby Drive
GulfCoastPoets@gmail.com

Tuesdays

Galveston Poets
Roundtable, Second
Tuesday (Galveston),
Moderator: John Gorman,
7 pm (dinner), 8pm
critique.
On the Island, FMI,
Billie McCauley
<gmaaa@aol.com>

Barnes & Noble Poetry
Reading & Open Mic, 7:30
pm, Fourth Tuesday
(Webster), MC: Oscar
Pena, B&N, Bay Area Blvd
at I-45 pena554343@aol.com

Fridays

First Friday (Houston),
Moderator: Robert Clark,
W. Main Street,
Houstonfirstfri@aol.com
<http://inprintheouston.org/first-Fridays>

Robert is the organizer of
the Houston Poetry Fest.